



**Himalayan Mountains,
Asia**



**Forest,
Northern Europe**



Arctic



**Great Barrier Reef,
Australia**



**Kalahari Desert,
Southern Africa**



**River,
England**



**Maine Beach,
North America**



**Amazon Rainforest,
South America**



**Serengeti Savanna,
East Africa**



Snow leopard



Tahr



marmot



Otter



Heron



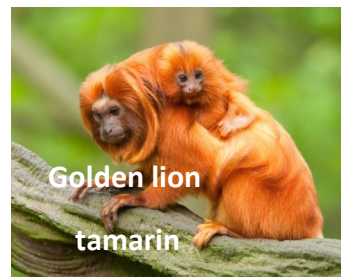
pike



Green iguana



Glass frog



Golden lion
tamarin



Sea cucumber



Blacktip reef shark



Lionfish



Meerkat



Puff adder



White backed
vulture



puffin



mussels



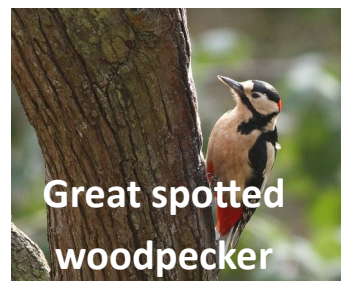
Harbour seal



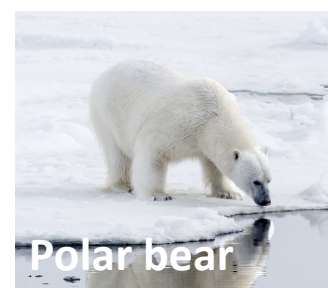
Red squirrel



badger



Great spotted
woodpecker



Polar bear



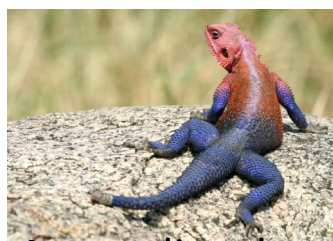
Arctic fox



Snowy owl



lion



Agama lizard



Secretary bird

Name:

My habitat is:

Some animals in my habitat are:

They live here because:

Name:

Link the Chains

There are three food chains on this sheet!
Can you draw arrows connecting each chain—from the producer to the primary consumer and from the primary to the secondary consumer?

Think about:

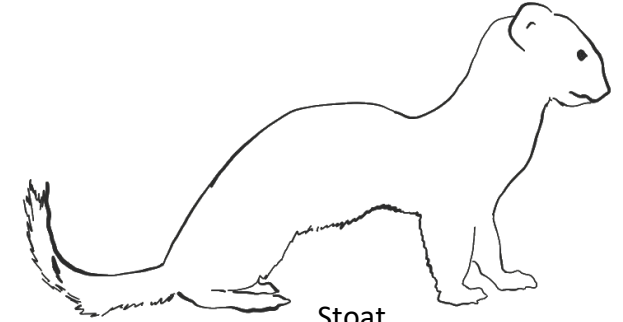
- ⇒ What do you already know about each plant / animal?
- ⇒ What do they eat?
- ⇒ What is their relative size?
- ⇒ Does their name give you any hints?



Beech Tree



Field Vole



Stoat



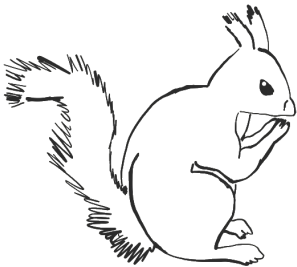
Banded Snail



Barn Owl



Red Fescue



Red Squirrel



Hare's Foot Trefoil



Song Thrush



Hare's Foot Trefoil

A widespread clover
found in dry grasslands
and sandy soils
pale pink flowers



Banded Snail

The most colourful snail in
the UK

range of habitats -
woodland, grassland,
hedgerows, garden shrubs

Plant feeder - wide range
of fresh vegetation, includ-
ing grasses and clover



Beech

Deciduous tree

Produces nuts



Field Vole

One of the most common
mammals in Europe

Found in moist grassy
habitats

herbivore



Stoat

Small predator

long, low-slung body that
makes it particularly well
suited to hunting small
rodents and rabbits

active by day and night



Red Fescue

A grass

Found in meadow
grasslands



Red Squirrel

Tree squirrel

Lives in woodlands



Barn Owl

Common throughout UK

Hunts mostly by night but
can hunt by day

specialises in hunting ani-
mals on the ground, nearly
all small mammals



Song Thrush

Song bird

Partially migratory

Omnivorous

Tends to use a favourite
stone as an anvil to break
open its dinner